

# 2022-23 AT A GLANCE

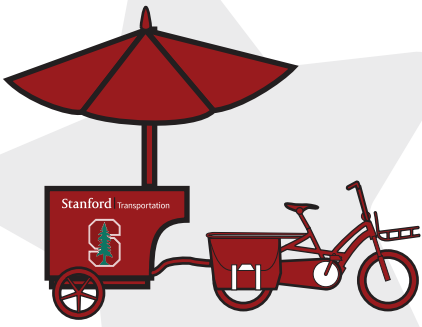
Thanks to our many [sustainable programs and offerings](#), the Stanford community continued to decrease its collective carbon footprint during the last fiscal year.

# 36%

## DRIVE-ALONE RATE HIT A NEW LOW

[Stanford's drive-alone](#) rate for our commuting students, faculty, and staff went from 67% in 2003 to 36% in 2022.

*We also soared to an all-time high of 22%+ for bike commuting.*



## CYCLING ENTHUSIASTS ATTENDED WEBINARS AND EVENTS

We offered [20+ free webinars](#) and events to help educate riders on bike safety and best practices.

*Fun Fact: We greeted over 300 bike riders with Bay Area [Bike To Work](#) bag giveaways at our Energizer Stations on May 18th.*

# 800+

## MARGUERITE ADDED SHOPPING EXPRESS

With the addition of [Shopping Express](#), Marguerite now encompasses [19 routes](#), providing service in and around the Stanford properties.

*Did you know? Stanford partnered with SamTrans to extend [Route 281](#), which now provides a direct route from East Palo Alto to the Stanford Oval and Stanford Medical Center.*



# 19



## ELECTRIC MARGUERITE MILES

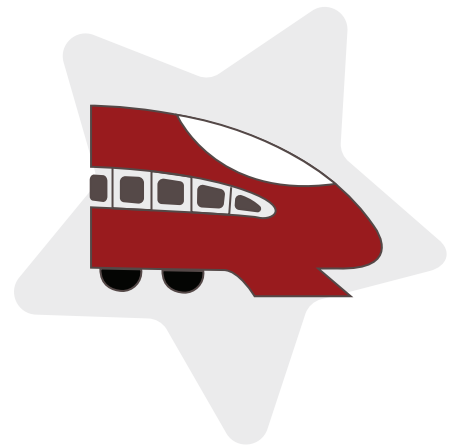
A whopping 449k miles were driven by electric [Marguerite](#) shuttles out of a total of 508k miles.

*Did you know? Marguerite shuttles help move about 6,250 people per day.*

# 449k

## ACTIVE CLIPPER CARDS

27,289 eligible commuters have Stanford-issued transit passes allowing them to travel for free on Caltrain, VTA, and/or AC Transit. Visit our [Free Transit and Commuter Benefits page](#) to learn more.

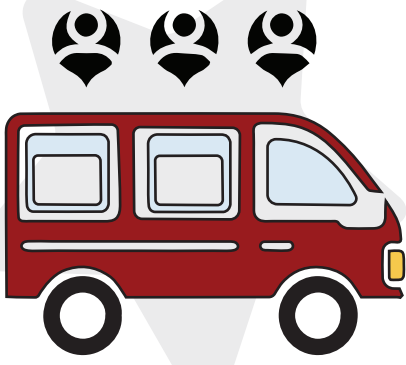


# 27k+

## ACTIVE VANPOOLS FOR EMPLOYEES

We continue to offer a [100% vanpool lease subsidy](#) for new and existing vanpools. Visit our [Vanpools page](#) to join an existing pool or start a new vanpool.

# 18+



## CUSTOMER INQUIRIES RESOLVED

[Our team](#) assisted the Stanford community with its parking and transportation needs by answering over 15,000 calls and 12,000 emails.



# 27k+